

# Accessible Nature



---

The Valley of the Giants Tree Top Walk  
Walpole-Nornalup National Park

---

# Contents

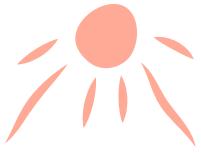
## Before We Go 3

Acknowledgement .....	3
Getting There .....	3
Parking .....	3
What's There .....	4
Accessibility and Inclusion .....	6

## When We Get There 7

Map .....	7
Nature Engagement and Recreational Activities .....	8
Tree Top Walk .....	9
Ancient Empire .....	10
Toilets .....	11
Ticket Office and Gift Shop .....	12
Communication Board .....	13
About Every Kid in a Park .....	14
Statement of Language .....	14
About Nature Play WA .....	14





# Before We Go

We recognise  
and acknowledge  
Menang people  
as the traditional  
owners of  
Walpole-Nornalup  
National Park.

## Getting There

The Valley of the Giants Tree Top Walk  
is located on Valley of the Giants Road,  
Tingledale WA 6333

GPS:

-34.97705637719957, 116.89523051332199

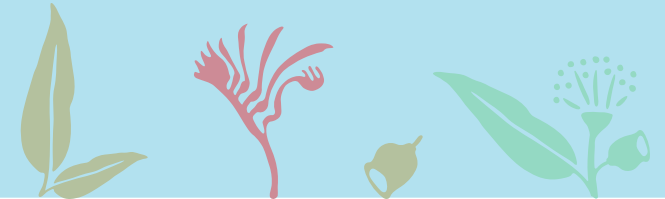
See Google Map reference [here](#)

## Parking

The Valley of the Giants Tree Top Walk car  
park is large, with a sealed surface and  
marked bays, including wheelchair accessible  
parking bays located close to the entrance.  
Please note that the Valley of the Giants Tree  
Top Walk is a very popular tourist destination,  
especially during school holidays. We  
suggest you keep this in mind, as parking  
may be limited during this time.



Splendid fairy-wren (Ter Ter)





## What's There

The Valley of the Giants Tree Top Walk is an internationally-recognised nature-based tourism attraction. It is located in the heart of the Walpole Wilderness between Denmark and Walpole. Some of the plants in this area, including the giant tingle trees, have origins that are traced back 65 million years. This was back when Australia was part of the supercontinent of Gondwana with what are now Africa, India, Antarctica and South America. Much of the plant life in the tingle forest is unique to this area, including tingle trees, which are endemic to a small area surrounding the town of Walpole.

### Tree Top Walk

The Tree Top Walk features a stunning walkway that extends to 40 metres above the ground in the spectacular heights of the tingle forest canopy. This is a 600-metre walk on a grated steel bridge with a slight incline upwards. The Tree Top Walk is wheelchair accessible and pram friendly. Complimentary wheelchair and stroller hire is available at the Ticket Office and Gift Shop.

### Ancient Empire

The Ancient Empire walk trail is a sealed trail path that weaves its way across the forest floor in amongst 400-year-old red tingle trees. Information is available on interpretive signage that explores the story of Gondwana and the Mesozoic era. With their huge hollowed-out trunks, the red tingle trees are just as spectacular when viewed at ground level as they are high up in the forest canopy.

### Discovery Centre

The Discovery Centre features a great range of visitor information and displays.

### Ticket Office and Gift Shop

Along with ticket sales to the Tree Top Walk, the Ticket Office and Gift Shop has a selection of locally sourced products, artworks and souvenirs. A range of confectionary, ice creams and drinks are available for purchase.

## Entry Fees

Entry fees apply for the Tree Top Walk only. Entry to the Ancient Empire and Discovery Centre is free.

### Tree Top Walk admission

**Adult** (16 years and over): \$21.00

**Concession:** \$15.50

(Australian Seniors, Age Pension, Department of Veterans' Affairs, Centrelink Carer, Disability Support and Companion cards)

**Child:** (6 to 15 years) \$10.50

**Family:** \$52.50 (2 adults, 2 children)

**Children 5 years and younger:** Free

## Opening Times

Monday to Sunday\*, 9:00 am - 5:00 pm

Visit the [Valley of the Giants Tree Top Walk website](#) for more information.

*\*Please note:*

Last ticket sale for the Treetop Walk 4:15pm.

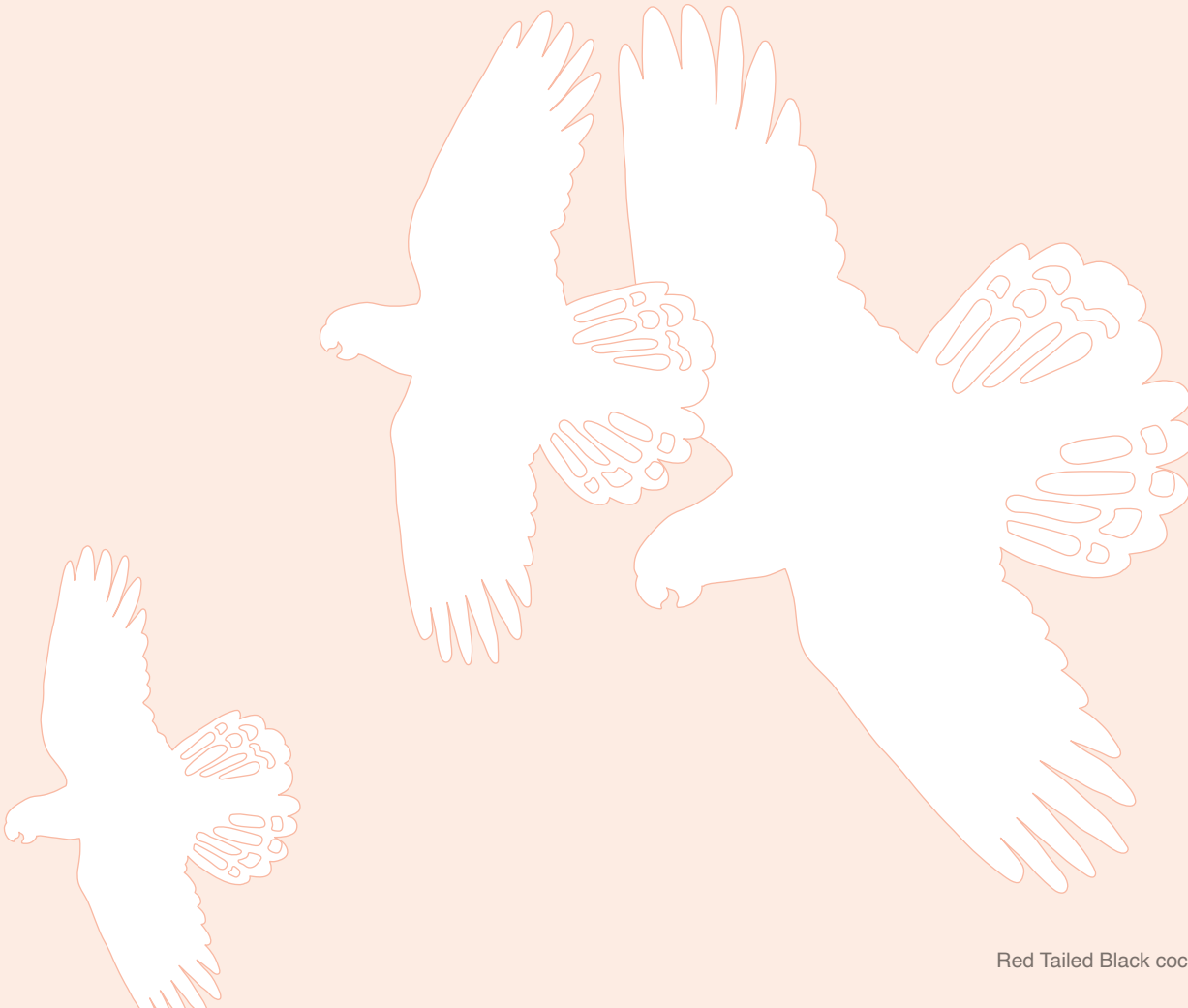
Extended hours from 26th December to 26th January.

Closed on Christmas Day and during hazardous conditions.



Scan to download **Every Kid in a Park** App

Explore another section of the Walpole-Nornalup National Park using the **Knolls Interpretive Trail**. The Interpretive Trail follows the family-friendly Knolls Walk Trail. The Interpretive Trail consists of six (6) stops and can be accessed through the Every Kid in a Park app.



Red Tailed Black cockatoo (*Karak*)



*Google Play Store*



*Apple App Store*



*Web App*



# Accessibility and Inclusion

- The carpark is large and has a sealed surface and marked bays, including wheelchair-accessible parking bays close to the entrance.
- There is a level bitumen path leading from the car park to all facilities. The path is wide and approximately 50 metres long, with a gentle slope down into the main entry.
- The Tree Top Walk is a 600-metre path on a grated steel bridge with a slight incline upwards. Between each ramp there is a viewing platform. The Tree Top Walk is wheelchair accessible and pram friendly.
- The Ancient Empire walk is wheelchair accessible for the first 150 metres of the trail. Upgrades to the Ancient Empire will be completed in 2023, creating an accessible trail over 500 metres.
- Toilets are located to the left of the Ticket Office and Gift Shop as you arrive through the car park. Toilets are flushable and wheelchair accessible. The unisex accessible toilet is approximately 50 metres from the accessible parking bay.
- A baby change table is located within the unisex accessible toilet.
- Key elements of the park are signposted, however there are no Braille translations. Fact Sheets are available in English, Chinese and German.
- Interpretive signage along Ancient Empire is in English only, and offers no Braille translations of options for non-English speaking visitors.
- Seating and rest areas are available throughout the park including at the entry and along the Ancient Empire walk.
- The Tree Top walk features a number of lookout spots allowing you to take a break along the walk. There are no seats available at these lookout posts.
- Depending on your time of visit, there may be a number of other families visiting. Be mindful of crowds and plan your visit around school holidays. During this time, the car park is busy and there may be a wait time to explore the Tree Top Walk.
- Wildlife, including birds, can be seen and often heard in the forest.
- Dogs and any other pets are not allowed onsite. Guide dogs and assistance animals are exempt from this.
- A range of confectionary, ice creams and drinks are available for purchase at the Ticket Office and Gift Shop.
- Free guided walks along the Ancient Empire and Bibbulmun Track are offered daily (except during school holidays, peak periods or inclement weather). Visit the Ticket Office and Gift Shop for more information.
- School holiday programs are run each year (excluding winter). Visit the Tree Top Walk website ([www.treetopwalk.com.au](http://www.treetopwalk.com.au)) to find a nature-based activity suitable for kids and adults.
- Complimentary wheelchair and stroller hire is available at the Ticket Office and Gift Shop.
- A communication board has been placed at the end of this document for your use at the Valley of the Giants Tree Top Walk in the Walpole-Nornalup National Park.



## Feel

- **Change in ground surface**
- **Increased body temperature**
- **Increased heart rate**
- **Nature**
- **Shared personal space**
- **Uneven terrain**
- **Weather**



## Sounds

- **Nature**
- **People**
- **Trees rustling**
- **Traffic**
- **Wildlife**
- **Wind/Weather**



## Sights

- **Glare**
- **Nature**
- **People**
- **Varied natural light**
- **Wildlife**
- **Wildlife displays**



## Smells

- **Dust**
- **Food/Drink**
- **Nature**
- **Sunscreen**

# When We Get There



Toilets



Gift shop



Ticket Office and Gift Shop



Tree Top walk



Ancient Empire walk



Parking



## Nature Engagement and Recreational Activities

- Walpole-Nornalup National Park is the perfect place to take in the incredible biodiversity of the South West – much of which is endemic to the area. It's home to dense karri and jarrah forests, pristine ocean and river waters, and of course, the famous tingle trees.
- Tingle trees are known for their huge trunk bases – in fact, they're the largest-girthed eucalypt in the world! They can live for more than 400 years and reach heights of around 75 metres. Karri, jarrah and marri trees are also plentiful in Walpole-Nornalup National Park.
- From late winter to spring, wildflowers begin to bloom. Slipper orchids, purple and pink enamel orchids, cowslip orchids and flying duck orchids are great fun to hunt for. The Holly flame pea, tassel flower, clematis, hovea, dampiera and karri wattle are just some of the wildflowers that add an explosion of colour to the area.
- Some of the many birds you're likely to see are the New Holland honeyeater, grey fantail, fairy-wrens, osprey, Australian ringneck, white breasted robin, willie wagtail, western rosella and red wattlebird.

The park is also home to some rare, endangered species, including the crested shrike-tit, red-tailed black-cockatoo and Western bristlebird, along with the vulnerable species of the Southern emu-wren and hooded plover.

- The quokkas of the South West are a little different to the quokkas of Rottnest. They are mainly nocturnal and very shy!
- Other land mammals include the quenda, Western grey kangaroo, mardo, phascogale, bushtail possum and Southern forest bat.
- There are 32 species of reptiles living in Walpole-Nornalup National Park and include the marbled gecko, tiger snake and dugite.

- Free guided tours are available each day exploring the tingle forest along the Ancient Empire and Bibbulmun Track. These tours are offered daily, except during school holidays, peak periods or bad weather. Visit the Ticket Office and Gift Shop for more information.
- There are many fun-filled activities held during school holiday periods (excluding winter). These activities are nature-based and suitable for all ages. Visit the Ticket Office and Gift Shop or the Tree Top Walk website ([www.treetopwalk.com.au](http://www.treetopwalk.com.au))



### Feel

- Change in ground surface
- Increased body temperature
- Increased heart rate
- Nature
- Shared personal space
- Uneven terrain
- Weather



### Sounds

- Nature
- People
- Traffic
- Trees rustling
- Wildlife
- Wind/Weather



### Sights

- Glare
- Nature
- People
- Varied natural light
- Wildlife
- Wildlife displays



### Smells

- Dust
- Food/Drink
- Nature
- Sunscreen



## Tree Top Walk

The Tree Top Walk features a stunning walkway rising 40 metres above the ground in the spectacular heights of the tingle forest canopy. This is a 600-metre walk on a grated steel bridge with a slight incline upwards. The Tree Top Walk is wheelchair accessible and pram friendly.

Complimentary wheelchair and stroller hire is available at the Ticket Office and Gift Shop.



### Feel

- Change in ground surface
- Increased body temperature
- Increased heart rate
- Perspiration
- Shared personal space
- Uneven terrain
- Weather



### Sounds

- Nature
- People
- Trees rustling
- Wildlife
- Wind/Weather



### Sights

- Glare
- Nature
- People
- Varied natural light
- Wildlife



### Smells

- Dust
- Food/Drink
- Nature
- Sunscreen





## Ancient Empire

A walk trail links the Tree Top Walk to the Ancient Empire, where a sealed trail meanders across the forest floor between 400-year-old red tingle trees. Information is available on interpretive signage that explores the story of Gondwana and the Mesozoic era.

The Ancient Empire walk is wheelchair accessible for the first 150 metres of the trail.

There are currently upgrades planned for the Ancient Empire, where 300 metres of new trail will be created. Over 500 metres of this trail will become wheelchair and pram friendly. Detours may be in place while this work is undertaken. No standing trees will be removed for the creation of the extension, however some fallen logs will be cut or moved.

Free guided walk tours of the Ancient Empire operate daily. Visit the Ticket Office and Gift Shop for more information.



### Feel

- Change in ground surface
- Increased body temperature
- Increased heart rate
- Nature
- Perspiration
- Shared personal space
- Uneven terrain
- Weather



### Sounds

- Nature
- People
- Trees rustling
- Wildlife
- Wind/Weather



### Sights

- Glare
- Nature
- People
- Varied natural light
- Wildlife



### Smells

- Dust
- Food/Drink
- Nature
- Sunscreen

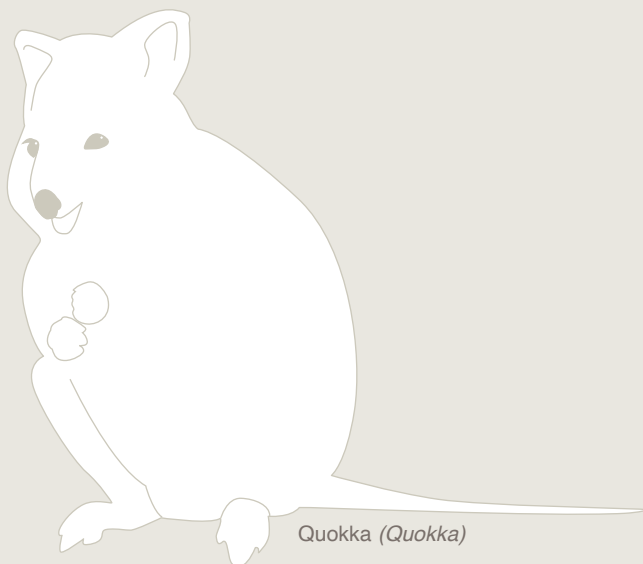




# Toilets

Public toilets are located at the entrance of the Tree Top Walk, to the left of the Ticket Office and Gift Shop.

The unisex accessible toilet is about 50m from the accessible parking bay. A baby change table is provided within the cubicle.



## Feel

- Change in ground surface
- Cool water
- Shared personal space (excluding accessible toilet)



## Sounds

- Door creaking
- Echo
- People
- Toilet flushing
- Traffic
- Water running
- Wildlife



## Sights

- Dim lighting
- Glare
- Mirror/Reflection
- People



## Smells

- Bathroom smells
- Disinfectant





## Ticket Office and Gift Shop

Along with ticket sales to the Tree Top Walk, the Ticket Office and Gift Shop has a selection of locally-sourced products, artworks and souvenirs. A range of confectionary, ice creams and drinks are available for purchase.

The Ticket Office and Gift Shop is accessible following a continuous path from the car park.



### Feel

- Change in ground surface
- Heating/Cooling
- Shared personal space



### Sounds

- Computers
- Door creaking
- Music
- Nature
- People
- Phones



### Sights

- Bright lights
- Glare
- People
- Wildlife displays



### Smells

- Food/Drink
- Nature
- Sunscreen



Gecko (Bibdjool)



Access  
Ability  
Australia

# Communication Board

## The Valley of the Giants Tree Top Walk Walpole-Nornalup National Park



Question



I need help



Where is



Time



Yes



No



I don't speak English



Deaf/Hard of hearing



Toilets



Animals



Ancient Empire



Tree Top Walk



Quiet place



Social Story



Rest area



Ticket Office and Gift Shop





Scan to download **Every Kid in a Park** App

## About Every Kid in a Park

This Accessible Nature guide has been developed for the Valley of the Giants Tree Top Walk in the Walpole-Nornalup National Park. This document is available online to help you plan your visit.

Download the Every Kid in the Park app for more information on the Valley of the Giants Tree Top Walk. The App is free to download and use, and is a tool developed for families to plan their visit and navigate their way through the park.

Every Kid in a Park is a project to support families of children of all abilities in accessing and enjoying the outdoors (like local parks, nature reserves, beaches, and national parks) around Western Australia.

## Statement of Language

Nature Play WA supports the Social Model of Disability. We are proud to work with families and industry professionals within the disability community, who continue to assist us in our approach to access and inclusion.

For more information about the Social Model of Disability, visit [People With Disability Australia](#).

## About Nature Play WA

Nature Play WA Inc. is an incorporated not-for-profit association established to increase the time Western Australian children spend in unstructured play outdoors and in nature.

For more information on what we do and who we are, visit the [Nature Play WA website](#).



*Google Play Store*



*Apple App Store*



*Web App*



Supported by



Department of Biodiversity,  
Conservation and Attractions