



Social Story

Today I'm visiting:

Rio Tinto Naturescape Kings Park
at Kings Park and Botanic Garden



Supported by



Department of Biodiversity,
Conservation and Attractions

Every Kid in a Park

Social Story

This is a Social Story™ about visiting Rio Tinto Naturescape Kings Park within Kings Park and Botanic Garden.

Social stories help explain social situations to children and adults with autism spectrum disorder, intellectual disability, developmental delays and learning challenges.

A Social Story™ answers the 'wh' questions – where and when a situation occurs, who is involved, what is happening and why. We suggest the Social Story™ be meaningfully shared in a reassuring tone.

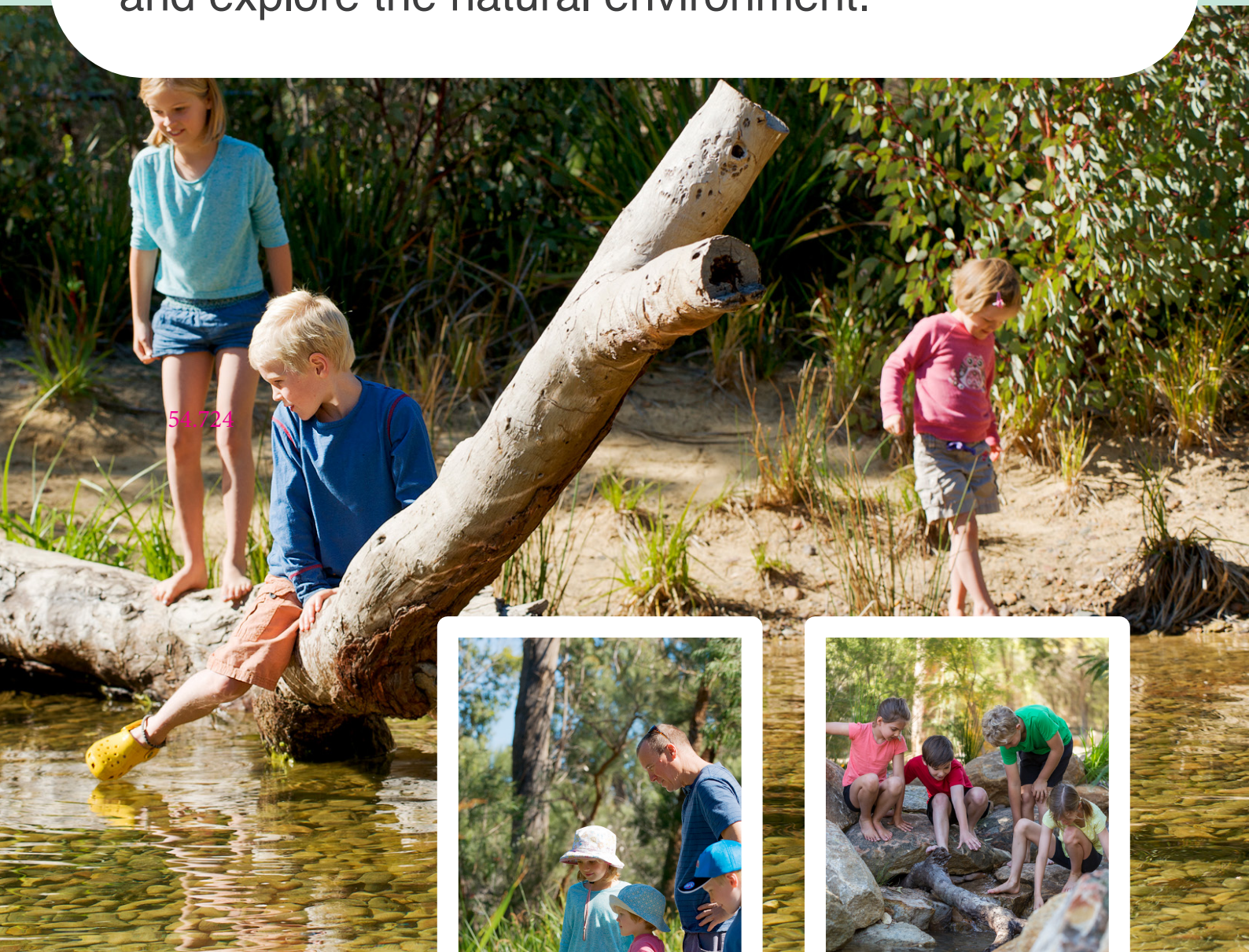
This Social Story™ aims to help people of all abilities to plan and prepare for their visit to Naturescape by explaining what they can expect on the day of their visit.

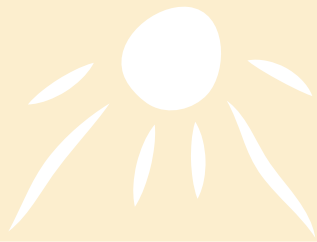
This Social Story™ was developed by Nature Play WA in consultation with local educators.





I am going to visit Rio Tinto Naturescape Kings Park.
Naturescape is in Kings Park and Botanic
Garden and is an outdoor space where I can play
and explore the natural environment.





I will need to bring comfortable walking shoes and a jacket on cold days.

It is important that I bring a hat, water bottle and sunscreen.





There is a yellow sculpture at the entrance with a pathway leading into Naturescape. I can walk through the sculpture, or next to it.

There are pathways with bushland and wetlands that lead to play equipment, picnic shelters, climbing structures and a creek.

There will be signs along the path that show information about Naturescape.





There are lots of things to do at Naturescape.

I might:

- Follow the pathway and explore the bushland or wetland.
- Play on the play equipment.
- Play with water at the Spring.
- Climb rocks, towers or walkways.
- Swing or climb on the ropes.
- Build a cubby.
- Paddle in the creek or waterhole.



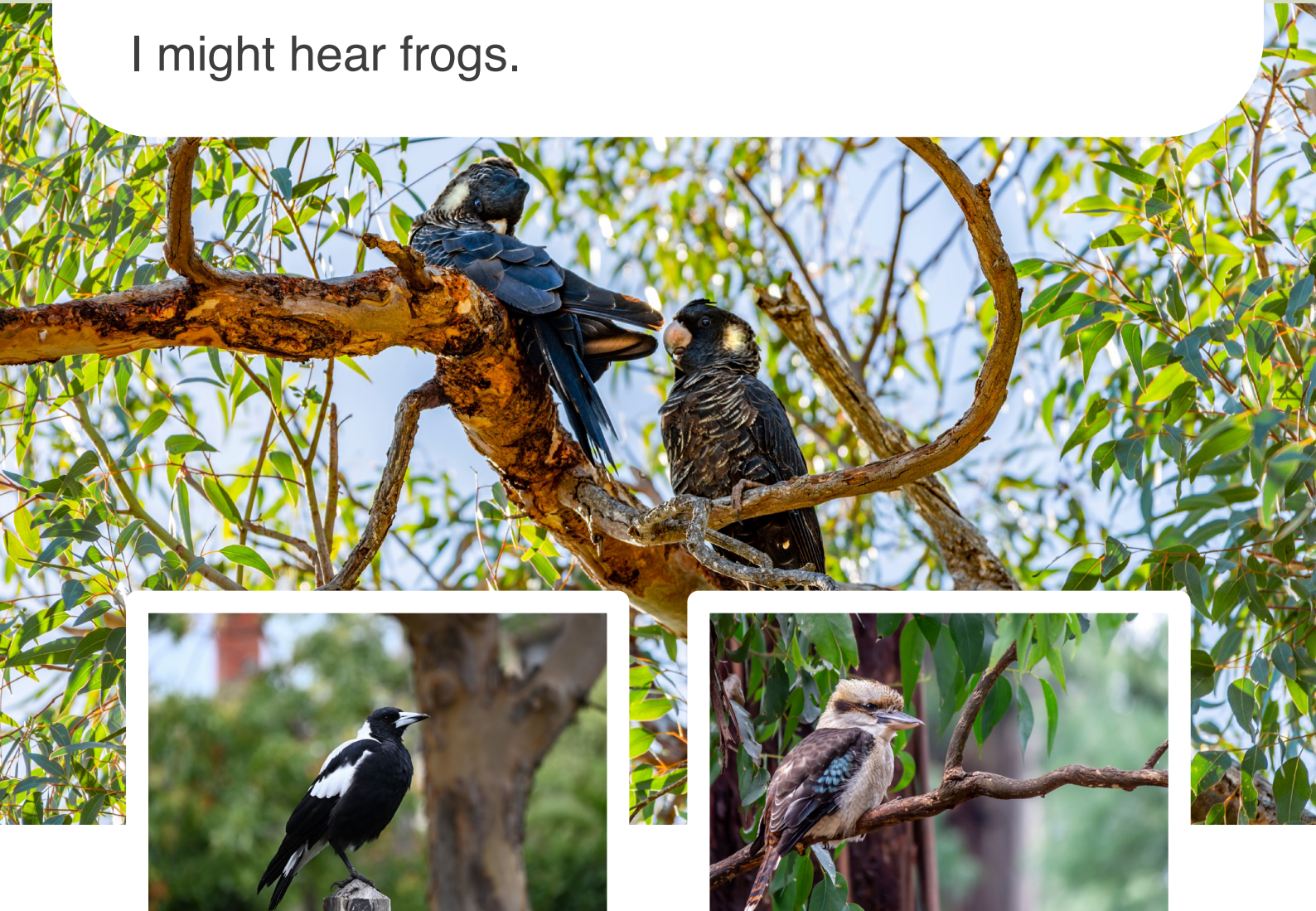


There are a lot of animals that I might see or hear at Naturescape.

I might see or hear birds like Carnaby's black cockatoos, magpies and kookaburras.

I might see insects and spiders, and reptiles like lizards.

I might hear frogs.





There are toilets at Naturescape.

My trusted person will be able to show me where they are.





I might visit The Python.

The Python is an aerial walkway. Aerial means up in the air!

It is 40 metres long and reaches up to seven (7) metres high.

I can walk and climb through this structure.

My trusted person will come with me.





I might walk through the billabong and over the walkway.

I might stop near the water and look for tadpoles or fish.

I might watch for dragonflies.

I might see ducks or other birds.





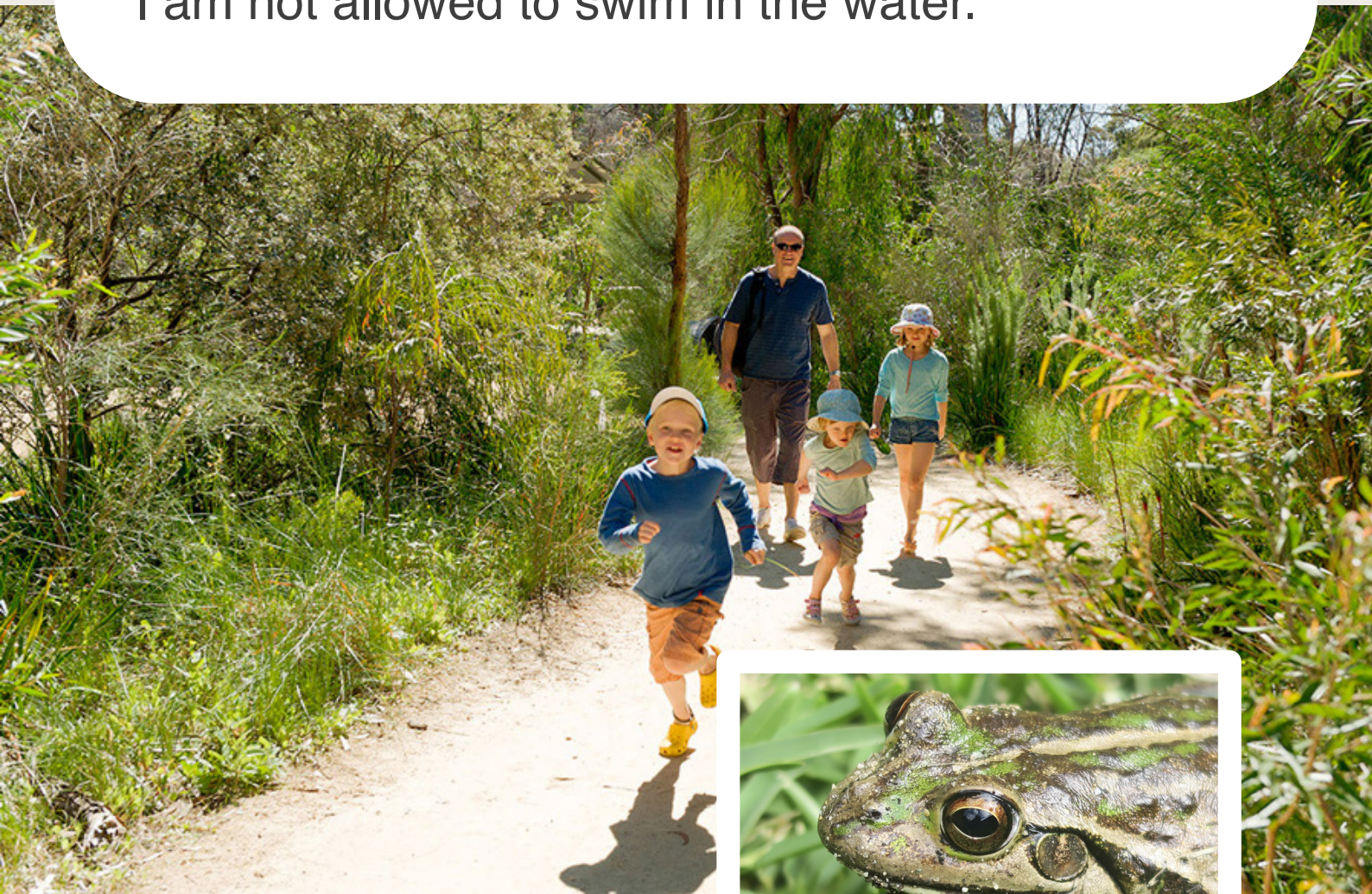
I might visit the Kooyar Kep Wetland.

I might climb the tree hide.

I might rest in the shelter.

I might hear frogs.

I am not allowed to swim in the water.





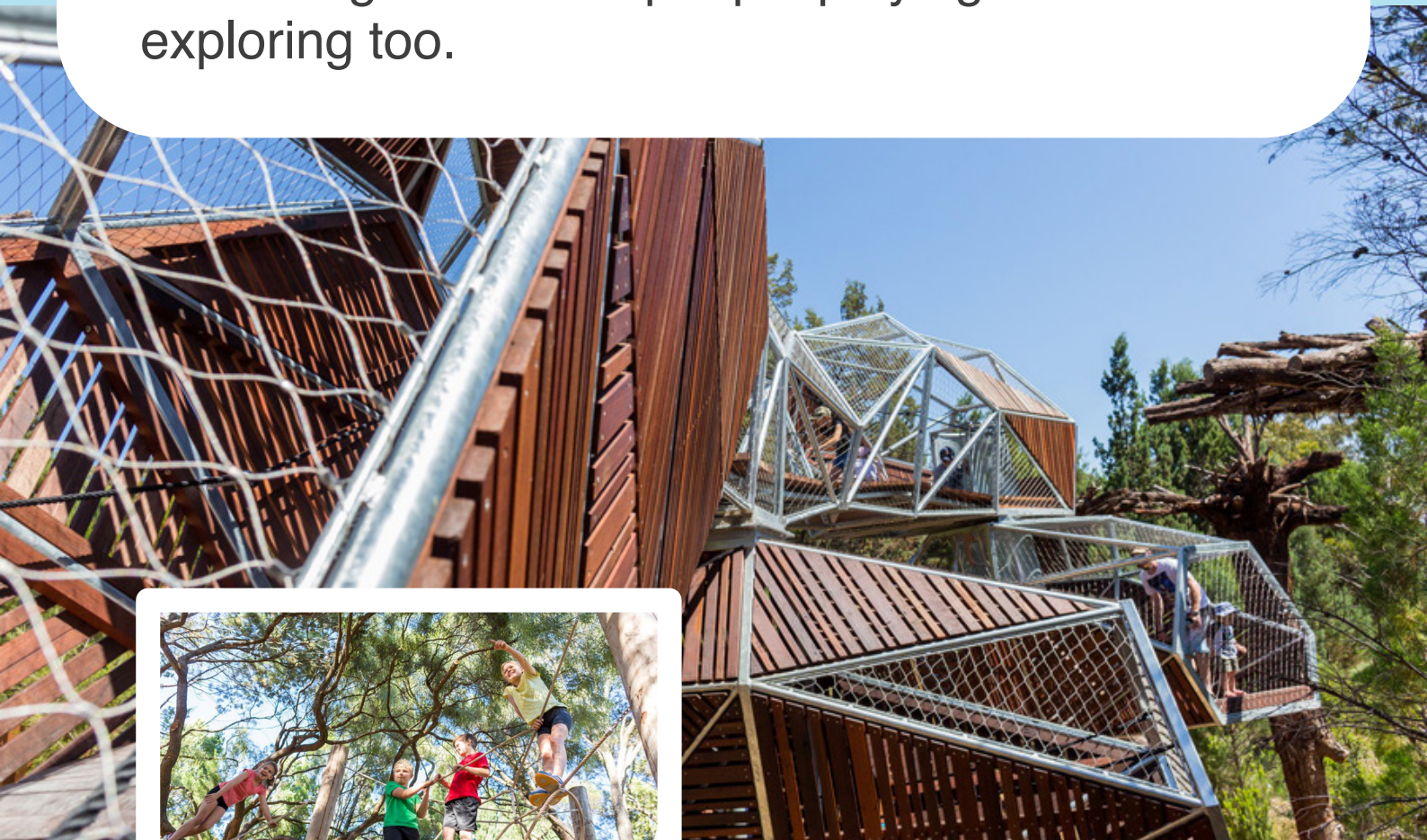
I might visit the Bungarra playground.

I might climb rocks or explore the bushland and natural play space.

I might look out over the waterhole.

I might climb or swing on the ropes.

There might be other people playing and exploring too.

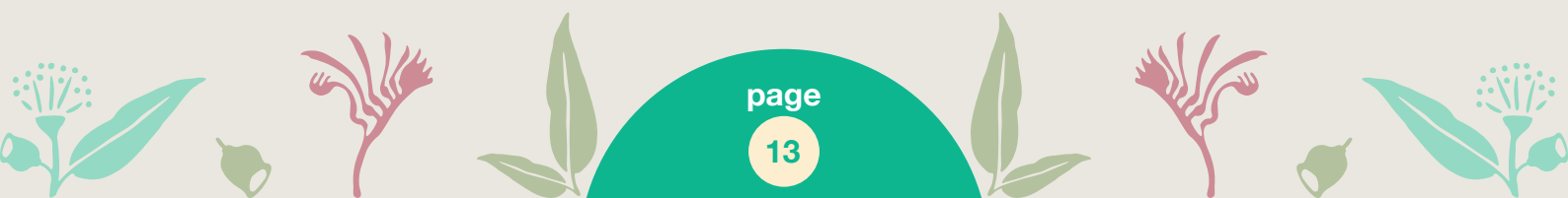




There is a creek at Naturescape.

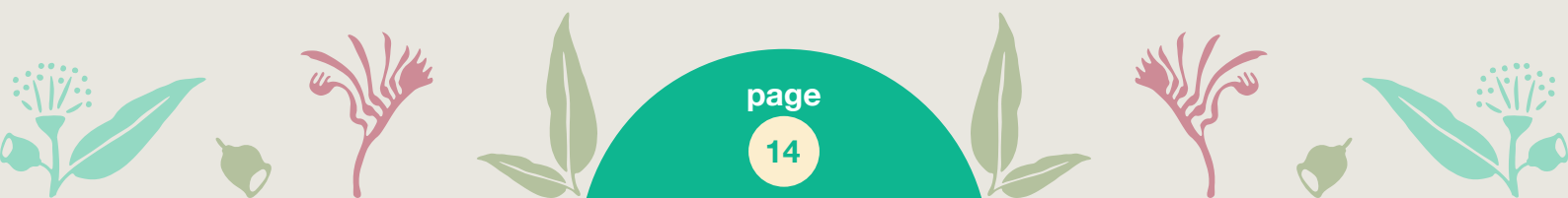
It is important that I ask my trusted person before I go near the water.

My trusted person will need to come with me.





If I am hungry, I will tell my trusted person.
I might visit Illyarrie Shelter to rest undercover.
I might visit a picnic shelter or a shady tree.





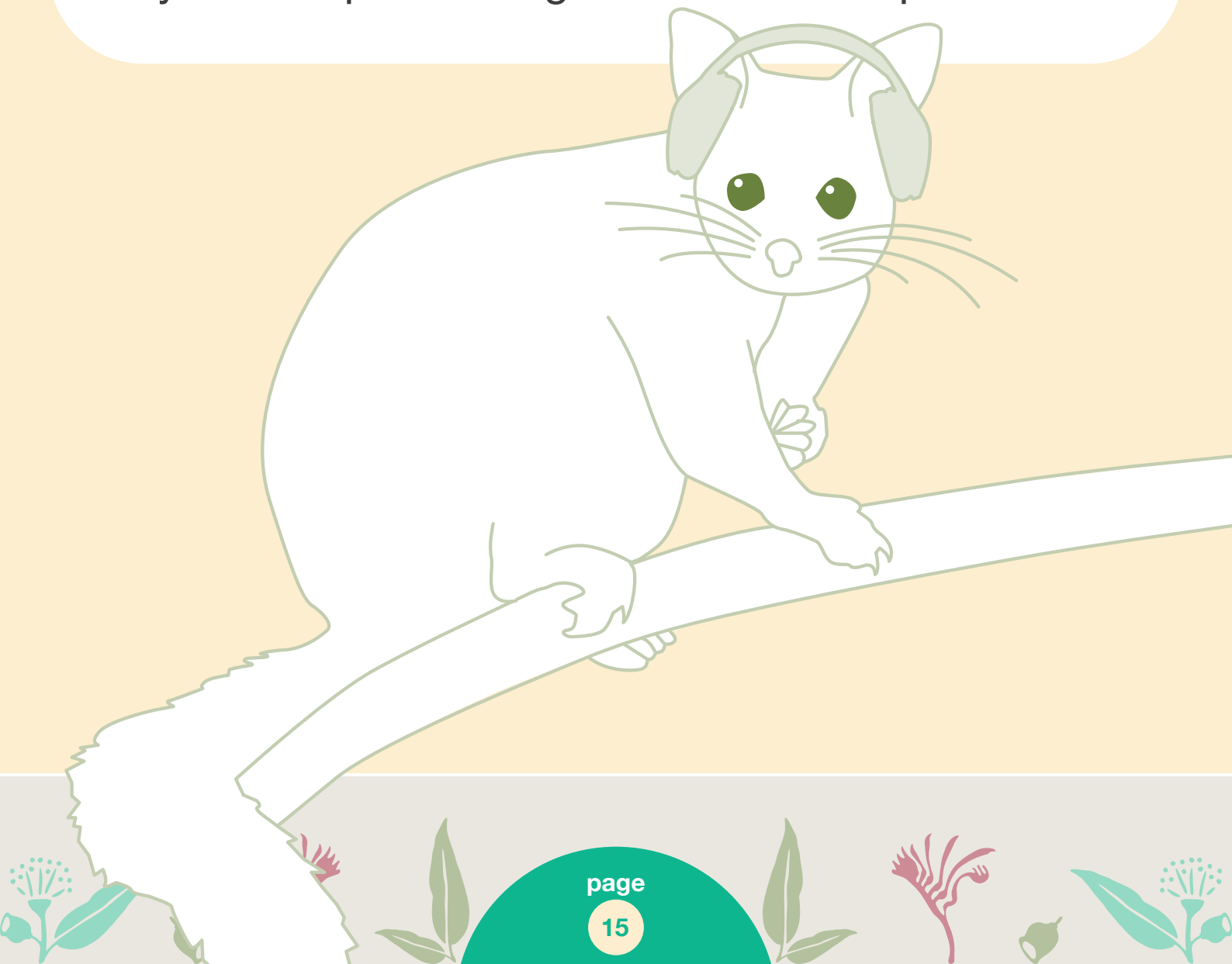
Sometimes, Naturescape might be noisy.

I might hear noisy birds and animals.

There might be lots of people playing and making noise.

To help with the noise, I can bring my ear defenders or ear plugs.

My trusted person might take me to a quiet area.





My trusted person will tell me when it is time to go home.

Naturescape is lots of fun!

