

# Accessible Nature



---

Dwaarlindjirraap, Lane Poole Reserve

---



# Contents

## Before We Go 3

- Acknowledgement ..... 3
- Getting There ..... 3
- Parking ..... 3
- What's There ..... 4
- Accessibility and Inclusion ..... 5

## When We Get There 6

- Map ..... 6
- Nature Engagement and Recreational Activities ..... 7
- Dwaarlindjirraap ..... 8
- Island Pool ..... 9
- Camping ..... 10
- Dwellingup Adventure Trails ..... 11
- Communication Board ..... 12
- About Every Kid in a Park ..... 13
- Statement of Language ..... 13
- About Nature Play WA ..... 13

*You can colour me in!*



Woylie (Woyli)



# Before We Go

We recognise and acknowledge Pinjarup and Wiilman people as the traditional owners of Lane Poole Reserve.

## Getting There

Lane Poole Reserve is located on Nanga Road in Teesdale, Western Australia.

GPS: -32.76152277914878,  
116.07643028632609

See Google Map reference [here](#)

## Public Transport

The closest train station to Lane Poole Reserve is Pinjarra on the Australind train line. For more information, visit the [Australind Train website](#).

TransPerth operates regular public transport to Mandurah, connecting with bus route 600 to Pinjarra. For more information about the services, visit the [Transperth Journey Planner](#).

## Parking

Various parking options are available at main visitor locations, including Dwaarlindjirraap, Island Pool, Bob's Crossing, Scarp Pool, and Scarp Lookout. More information is provided later in the document on pages relating to each of these locations.



Quokka (Kwoka)





Scan to download **Every Kid in a Park App**

## What's There

Lane Poole Reserve is located just outside of Dwellingup in the Murray River Valley; about 90 minutes by car from Perth. This part of the valley consists of beautiful forest, rolling hills, and of course, the meandering Murray River.

Dwaarlindjirraap is a popular spot in the reserve, and is the perfect place to swim, launch a kayak, or picnic by the river. Barbecues, accessible toilets and accessible parking are available. Multiple sites provide plenty of camping opportunities under the canopy of blackbutt, jarrah and marri trees, as well as along the river. For more information on camping at Lane Poole Reserve, visit [Park Stay WA](#).

Adventurers can try kayaking in the colder months, when rainfall sees the river flowing much faster. Mountain biking is another great way to explore Lane Poole Reserve, with a network of mountain bike trails weaving throughout the reserve and surrounding forest.

## Entry Fees

### Private vehicle with up to 12 occupants

- \$15 per vehicle
- \$8 per vehicle (concession)

### Private vehicle with more than 12 occupants

- \$7 per occupant 6 years or older
- \$2.50 per occupant (concession)

### Motorcycle

- \$8 per vehicle

No entry fees apply if you walk or cycle into a park.

## Opening Times

Lane Poole Reserve is open 24 hours a day, seven days a week, 365 days a year.



*Google Play Store*



*Apple App Store*



*Web App*



## Accessibility and Inclusion

- The park is surrounded by natural bushland and walk trails. The ground surface is mostly loose gravel that may be uneven in places. Be mindful of this loose and uneven gravel as you explore Lane Poole Reserve.
- Toilets are located at Dwaarlindjirraap (including accessible toilets) and Island Pool.
- Parking is available at all main attractions; however, parking is limited and the river can only be accessed by stairs. Dwaarlindjirraap features the largest number of accessible parking bays, with a loose dirt track leading down to the picnic area.
- Key elements of the park are signposted, however there are no Braille translations or options for non-English-speaking visitors.
- There are numerous seating, picnic and barbecue options in Lane Poole Reserve. These areas are mostly shaded by natural tree coverage.

- The sound of the Murray River flowing may be loud, especially in winter and spring.
- Food and drinks are not available for purchase on site. Please bring your own food and water when visiting.
- Dogs are welcome in some areas, but must remain on a leash.

A communication board has been placed at the end of this document for your use at Lane Poole Reserve.



### Feel

- Change in ground surface
- Cool water
- Nature
- Shared personal space
- Uneven terrain
- Water resistance
- Weather



### Sounds

- Nature
- People
- Trees rustling
- Traffic
- Water running
- Wildlife



### Sights


- Glare
- Nature
- People
- Varied natural light
- Wildlife



### Smells

- Dust
- Nature
- Sunscreen

# When We Get There


 Bob's Crossing


 Dwaarlindjirraap


 Entry station

 Island Pool

 Public toilets

 Scarp Pool

 Scarp Lookout

 Treetops Adventure Dwellingup

 Camping

1 Nanga Bush Campground

2 Baden Powell Campground

3 Charles Flat Campground

4 Chuditch Campground

5 Tonys Bend Campground

6 Nanga Mill Campground

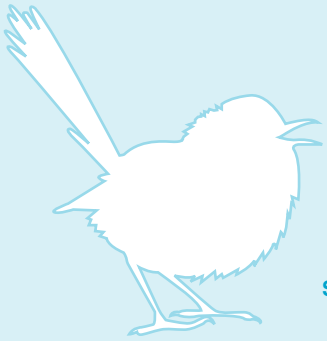
7 Nanga Townsite Campground

8 Nanga Brook Campground

9 Stringers Campground

10 Yarragil Campground





Splendid fairy-wren (*Djer-djer*)

## Nature Engagement and Recreational Activities

- Lane Poole Reserve is surrounded by lush bushland including blackbutt, jarrah, marri and grass trees.
- There are as many as 70 different species of birds such as the noisy scrub-bird, Baudin's, Carnaby's and Red-tailed black cockatoo, grey fantail, Australian ringneck and splendid fairy-wren.
- The park is home to a variety of wildlife including quokkas, woylies, chuditch, skinks and slender tree frogs.
- Swimming in the Murray River are marron, rainbow trout and redfin perch.
- The Murray Valley mountain bike trails are part of the Dwellingup Adventure Trails network, which includes walk, cycle, drive and canoe experiences. For more information visit [Explore Parks WA](#).
- There are various camp sites located throughout Lane Poole Reserve. This includes popular sites like Charlies Flat, Nanga Mill and Baden Powell campgrounds. Some sites are bookable;

however, a number operate on a first come first served basis. Campgrounds may get busy, especially during weekends and holidays.

- Wildflowers are in bloom in spring, when the bush comes alive with bird's foot grevilleas, river banksias, pointed leaved acacias and more.
- The best time to see wildflowers is from September to November.

- There are a variety of textures for children to interact with including plants, trees, grass and water.
- Wildlife can be viewed and heard throughout the park.
- We suggest visiting the [Dwellingup Trails and Visitor Centre](#) to plan your visit.



### Feel

- Change in ground surface
- Cool water
- Increased body temperature
- Shared personal space
- Uneven terrain
- Weather



### Sounds

- Nature
- People
- Trees rustling
- Traffic
- Water running
- Wildlife



### Sights

- Glare
- Nature
- People
- Varied natural light
- Wildlife



### Smells

- Dust
- Nature
- Sunscreen



# Dwaarlindjirraap

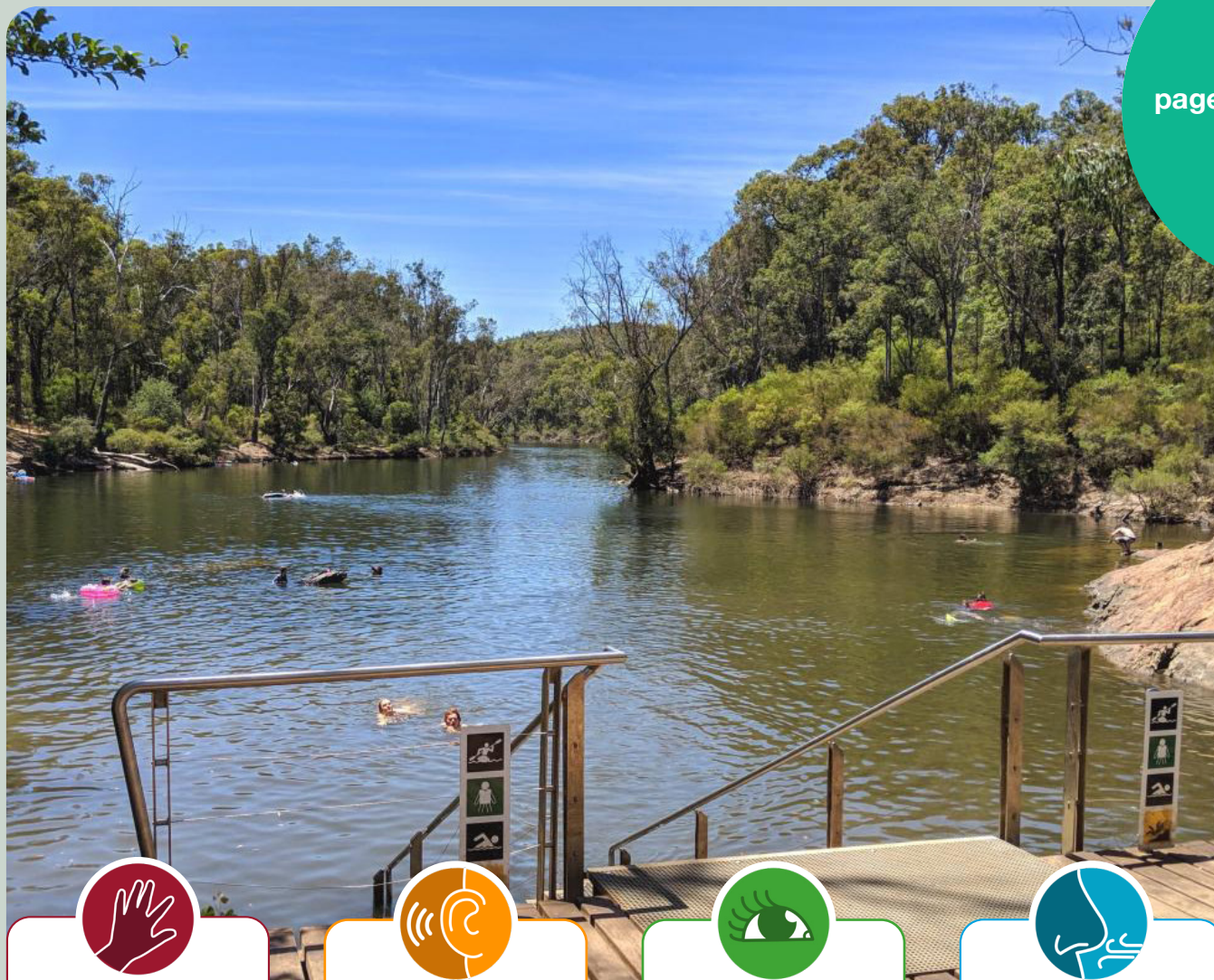
Dwaarlindjirraap is a popular place to visit in Lane Poole Reserve, with a large parking area and sealed road access right by the river. Scenic paths weave through the area, one of which includes a suspension bridge for walkers and cyclists.

There are picnic tables, barbecues and access to the water's edge for swimming, or exploring with a kayak or canoe. The water can only be accessed using stairs into the river.

There are multiple toilet blocks at Dwaarlindjirraap, including accessible toilet facilities.

Parking is available including ACROD bays. A gravel pathway leads to the picnic area, with stairs leading into the river.

*Photo credit: Department of Biodiversity, Conservation and Attractions*



### Feel

- Change in ground surface
- Nature
- Shared personal space
- Uneven terrain
- Water
- Weather



### Sounds

- Nature
- People
- Water running
- Wildlife



### Sights

- Glare
- River
- Splashing
- Wildlife



### Smells

- Nature
- Sunscreen



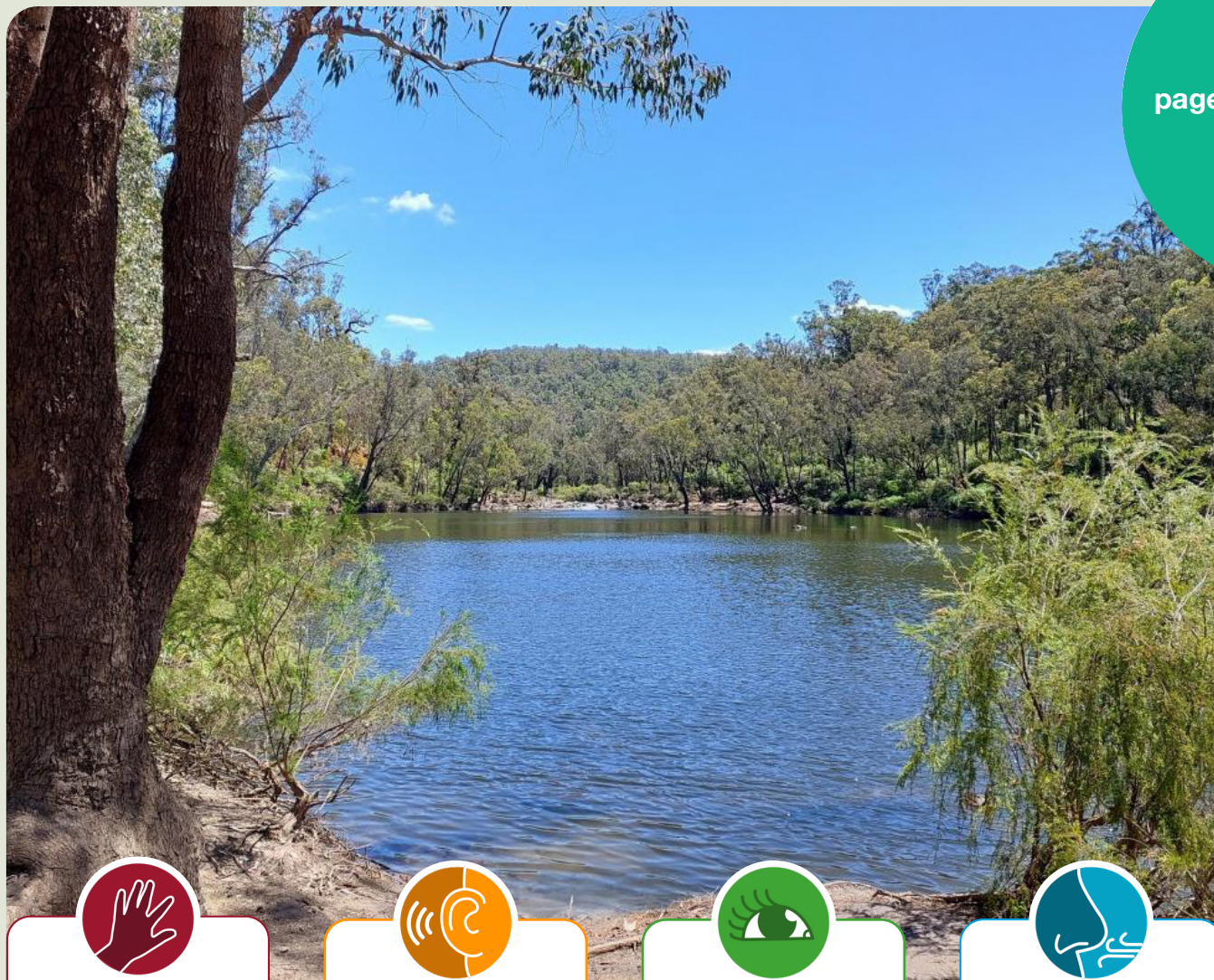
# Island Pool

Island Pool is a pretty place to stop and enjoy a picnic or a swim, launch a canoe or kayak, or follow the Island Pool walk trail.

The Island Pool walk trail starts from the car park and explores the scenic jarrah forest. This is a popular trail in spring with an abundance of wildflowers. For more information, visit the [Trails WA website](#).

There are toilets located here but they do not include accessible toilet facilities.

A limited amount of parking is available with no designated accessible bays.



### Feel

- Change in ground surface
- Nature
- Shared personal space
- Uneven terrain
- Water
- Weather



### Sounds

- Nature
- People
- Water running
- Wildlife



### Sights

- Glare
- River
- Wildlife



### Smells

- Nature
- Sunscreen



Photo credit: Department of Biodiversity, Conservation and Attractions



# Camping

There are several family-friendly campgrounds within Lane Poole Reserve. The following are bookable campgrounds:

- Baden Powell
- Chuditch
- Charlies Flat
- Nanga Brook
- Stringers
- Tonys Bend
- Yarragil

The following sites are non-bookable and operate on a first come first served basis. These locations often get busy during peak periods such as school holidays. We recommend arriving early and having an alternative accommodation plan in case there are no campsites available.

Non-bookable campsites in Lane Poole include:

- Nanga Mill
- Nanga Townsite

For more information visit [Explore Parks WA](http://www.explore.parks.wa.gov.au).



### Feel

- Change in ground surface
- Nature
- Shared personal space
- Uneven terrain
- Weather



### Sounds

- Nature
- People
- Splashing
- Wildlife



### Sights

- Glare
- River
- Wildlife



### Smells

- Nature
- Food

Photo credit: Department of Biodiversity, Conservation and Attractions



# Dwellingup Adventure Trails

The Murray Valley mountain bike trails are part of the Dwellingup Adventure Trails network, which includes walk, cycle, drive and canoe experiences. All trails are colour coded according to class, with green recommended for beginners, blue for intermediate riders with some technical skills, and black recommended for experienced riders. Trails are also marked for their adaptive use.

Visit the [Dwellingup Trails and Visitor Centre](#) for more information about trail conditions and maps. The centre also features toilets, showers, a laundromat and locker facilities for trail walkers, riders and visitors. A pump track next to the centre offers three (3) levels of difficulty for families to try.

For more information about Dwellingup Adventure Trails visit [Explore Parks WA](#).



### Feel

- Change in ground surface
- Increased body temperature
- Increased heart rate
- Perspiration
- Shared personal space
- Uneven terrain
- Weather



### Sounds

- People
- Trees rustling
- Water running
- Wildlife
- Weather



### Sights

- Dust
- Glare
- People
- River
- Varied natural light
- Wildlife



### Smells

- Nature

Photo credit: Department of Biodiversity, Conservation and Attractions



# Communication Board

<p>Question</p> 	<p>I need help</p> 	<p>Where is</p> 	<p>I want to</p> 	<p>Time</p> 
<p>Yes</p> 	<p>No</p> 	<p>I don't speak English</p> 	<p>Deaf/hard of hearing</p> 	<p>Toilets</p> 
<p>Water</p> 	<p>Trail</p> 	<p>Swim</p> 	<p>Trees</p> 	<p>Animals</p> 
<p>Wildflowers</p> 	<p>Picnic</p> 	<p>Rest Area</p> 	<p>Quiet Place</p> 	<p>Social Story</p> 



Scan to download **Every Kid in a Park** App

# About Every Kid in a Park

This Accessible Nature guide has been developed for Lane Poole Reserve. This document is available online to help you plan your visit.

Download the Every Kid in the Park app for more information on Lane Poole Reserve. The App is free to download and use, and is a tool developed for families to plan their visit and navigate their way through the park.

Every Kid in a Park is a project to support families of children of all abilities in accessing and enjoying the outdoors (like local parks, nature reserves, beaches, and national parks) around Western Australia.

## Statement of Language

Nature Play WA supports the Social Model of Disability. We are proud to work with families and industry professionals within the disability community, who continue to assist us in our approach to access and inclusion.

For more information about the Social Model of Disability, visit [People With Disability Australia](#).

## About Nature Play WA

Nature Play WA is an incorporated not-for-profit association and a registered charity, dedicated to supporting the mental and physical health of Western Australian children by growing their connection to nature and community through outdoor play.

For more information on what we do and who we are, visit the [Nature Play WA website](#).



*Google Play Store*



*Apple App Store*



*Web App*



Supported by



Department of Biodiversity, Conservation and Attractions